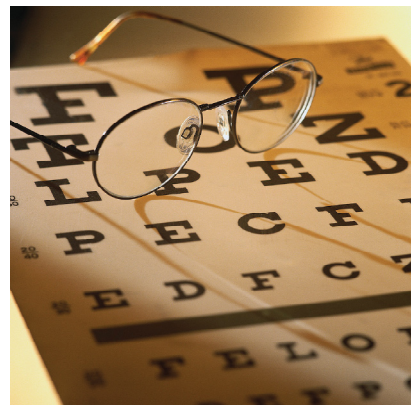


Pre-Optometry Program

Optometry school is just one of many options open to you when you earn a degree in Applied Science. UW-Stout's Applied Science program provides you with everything you need to enter optometry school. However, some things you should keep in mind include:



- + Do you enjoy biology, chemistry, and math?
- + Are you prepared for the extracurricular activities that will enhance your application into optometry school?
- + Are you willing to set aside time to become active in your community?

Optometry schools are competitive and therefore look for well-rounded students. You should focus on several things, such as excelling in your courses, maintaining a good grade point average, and being active in your community. Regional examples of optometry schools are listed below, but keep in mind many other choices exist. Check out other options through the Association of Schools and Colleges of Optometry at www.opted.org.

Admission Statistics for Optometry Schools

	Number Applied	Number Accepted	Avg. GPA	Avg. OAT
University of Illinois	912	160	3.39	N/A
Ferris State University	253	36	3.47	336
University of Indiana	371	75	3.47	N/A
Ohio State University	N/A	64	N/A	N/A
Illinois College of Optometry	966	331	3.39	343

N/A- Not available

Semesters Required for Entrance Into Optometry School

UW-Stout courses to fulfill requirements for entrance into optometry school*

	Biology BIO-135,136	Microbiology BIO-306	General Chem CHEM-135,136	Organic Chem CHEM-201	Biochemistry CHEM-311	Physics PHYS-241, 242	Math MATH-153	Statistics STAT-320	Psychology PSYC-110
University of Illinois	2	1	2	1		2			1
Ferris State University	2	1	2	2	**	2	1	1	1
University of Indiana	2	1	2	1		2	1	1	1
Ohio State University	2		2	1	1	2	1		1

*This is a general guideline that is subject to change.

Note: Other upper level science courses are highly recommended by all pre-professional optometry programs. Courses such as English, social sciences, and humanities are also required for entry into optometry school.

**Biochemistry is highly recommended at Ferris State

Important Factors to Consider

Internship The Applied Science program requires an internship to graduate, so students interested in optometry school should seek an experience in that field.

Volunteer Experience It is recommended that students show an interest in the optometry profession through volunteer experiences within the community.

Research Research experiences are provided to enhance a student's professional development. Students should seek out research activities early on to provide opportunities to publish peer-reviewed papers and present at regional and national meetings.

Testing-OAT The Optometry Admission Test (OAT) is a standardized examination designed to measure general academic ability and comprehension of scientific information. The OAT consists of four tests: survey of the natural sciences (biology, general chemistry, and organic chemistry), reading comprehension, physics and quantitative reasoning. More information on the OAT can be found at www.opted.org/info_main.cfm.