



# WELCOME

We are glad you will be living with us this fall. This booklet is designed to give you some basic information about living on campus for Spring 2017. Please read through this carefully - it will answer many of the questions you may have.

## WHAT TO BRING ✓

- Alarm clock
- Television & DVD Player
- Extra lighting / lamps
- Personal safe
- Shower shoes & caddy
- Bathrobe
- Laundry basket / bag
- Printer paper
- Insurance cards
- Bed linens, blanket & pillow
- Plants, posters, decorations
- TV cables & connections, coax cable



## WHAT NOT TO BRING ✗

- Pets (except fish)
- Large, loud stereos
- Alcohol (if under 21)
- Illegal drugs
- Candles & Incense
- Appliances with open heating elements
- Toasters, toaster ovens, etc.
- Telephone (no phone service in rooms)



## ROOM SIZE & FURNISHINGS

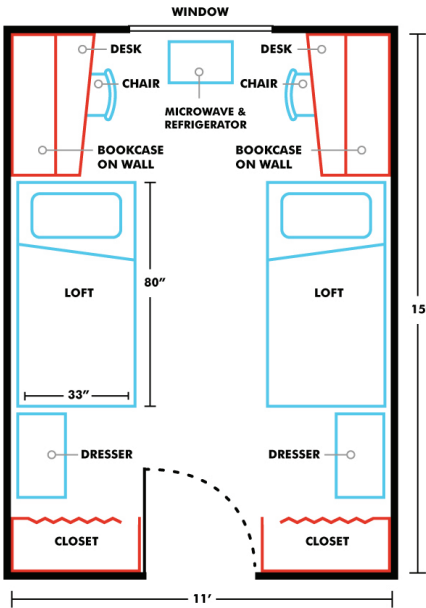
On the right are examples of student room layouts. The dimensions are approximate and each room may vary by several inches. Students living in Antrim, Chinnock, Fleming, Froggatt, Hansen, Hovliid, Keith, McCalmont and Milnes have moveable dressers, desks, and bookcases.

Each room is furnished with an appliance that includes a microwave, a separate freezer and a refrigerator. Students are not permitted to have additional refrigerators or microwaves.

The average size of a double room is 11'x15' and the ceiling height is approximately 7'8". Triple rooms average 11'x20'.



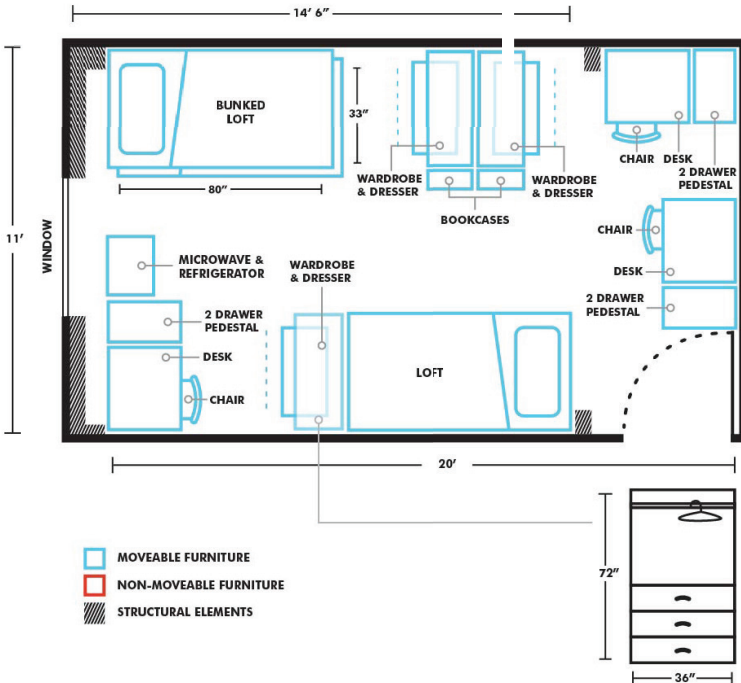
# ALL UNIVERSITY FURNITURE MUST REMAIN IN THE ROOM



We provide you with the following furnishings:

- loft, bed, mattress
- a desk & chair
- mirror
- window blinds
- computer & cable TV jack
- carpeting
- smoke detector
- dresser
- closet with shelf & clothes bar
- bookshelf
- trash & recycling containers
- refrigerator / freezer / microwave combination unit

*ALL mattresses are 33" x 80" so you may want to purchase extra long twin size sheets & mattress pads.*



- MOVEABLE FURNITURE
- NON-MOVEABLE FURNITURE
- STRUCTURAL ELEMENTS

## LOFTS

Lofts are provided in all student rooms. Your loft will give you additional space in your room and has 12 different levels so that you can put it at a height you are comfortable with. You and your roommate can also set up your beds as bunks, if you prefer that arrangement. You cannot build any lofts, bunks, or other structures in your room. If you want to put a futon or other couch under your loft, it should be 80" long or less.

The lofts are designed so your bed frame and mattress fit right on top of them. Please be aware that you cannot remove any beds, mattresses, dressers, desks, or other furniture from your room. The distance from the floor to the bottom of your lofted mattress is 5'6".

## ROOM DECORATING

To help you make plans for your new home, we want to provide you with some information to make the process go smoothly for you:

- There must be a 30" wide by 72" tall path of egress from the door to the window.
- The distance from the top of the mattress to the ceiling must be at least 25".
- Lofts may not be placed across the window.

These room furnishings may NOT be moved or disconnected:

- Closets, Walls and Doors
- Smoke Detectors
- Desks and Bookshelves (except in Antrim, Chinnock, Fleming, Froggatt, Hansen, Hovlid, Keith, McCalmont and Milnes)

The following are considered fire hazards and are also NOT permitted:

- Hangings or decorations of combustible material such as cloth, parachutes, flags, fishnets, wall hangings, crepe paper, Styrofoams, etc.
- Natural vegetation of a combustible nature such as Christmas trees, evergreen boughs, leaves, birch logs, etc. (Houseplants are fine!!)
- Multiple plug-ins or extension cords with multiple plug-ins (use power strips)
- Toasters, toaster ovens, and appliances with exposed heating elements
- Candles or incense - no open flame objects - lit or unlit
- The use and storage of flammable materials
- The possession or use of fireworks, gun powder, or explosive materials
- Tampering with or altering any electrical outlets or light switches (including dimmer switches and installing additional wiring)



## AIR CONDITIONERS

Students can bring their own air conditioner and will be charged \$100.00 per academic year, which covers utility costs, staff time to install and remove the unit, etc. All air conditioners must comply with the following restrictions which are based on energy conservation, energy use, and safety:

- Recommended BTUs: 5500 - 5700
- Maximum BTUs: 6000
- Maximum size: 13" high x 19" wide x 15" deep

Facilities staff will install and remove air conditioners - students should **NOT** perform these functions. You can request that your air conditioner be installed or removed by sending an email to: [housing@uwstout.edu](mailto:housing@uwstout.edu). Include your name, student ID number, room number, hall and a cell phone number where you can be reached.

## CABLE TV & MOVIES

Each student room is equipped with cable that offers 94 channels plus 46 music channels. Front desks offer over 1,400 different DVD's that can be checked out by residents for no charge. You can enjoy these by bringing your own DVD player or checking one out from the front desk. You will need to bring your own TV cables, connectors and coax cable.

## COMPUTER SERVICE

All rooms and lounges in the residence halls have wireless connectivity on StoutSecure or StoutGuest which easily allow you to do research, surf the web, send e-mails, connect to AccessStout (allowing you to register for classes, check your student bill, etc.) and Learn@Stout (D2L), the online class portal. Additionally all rooms are wired with internet.

All students will be issued a laptop and will not need to purchase any additional equipment. We recommend you purchase a lock to secure your laptop in your room or elsewhere.



## LAUNDRY & VENDING

Each residence hall has a laundry room equipped with several laundry machines and a sink for hand washing. Washers and dryers cost \$1.00 per cycle and will work with Baseline Plus Funds from your Stout Blue Card (your ID card)

We recommend that you use laundry detergent pods. Stout has front-loading washers which require less soap than top-loading machines, so plan to use less laundry detergent.

**DO NOT** use the 3 in 1 laundry sheets (they jam up the machines).

Vending machines in each hall have a variety of snacks and beverages. They accept Baseline Plus funds from your Stout Blue Card as well as dollars and change.

## MAIL & PACKAGES

Mail is delivered daily to each residence hall on North Campus and to Price Commons for South Campus. Your mail will be put into a locked mailbox that you may share with your roommate(s). All mail and packages should be addressed with the following information:

*Your name  
Your room number & hall name  
Your hall's street address (see below)  
Menomonie, WI 54751*

## RESIDENCE HALL ADDRESSES:

**Antrim-Froggatt-McCalmont**  
1015 3rd Street E

**Hansen-Keith**  
1215 3rd Street E

**Tustiton-Oetting**  
1105 3rd Street E

**Milnes-Chinnock**  
1215 3rd Street E

**South**  
115 13th Avenue E

**Wigen**  
106 1st Avenue W

**North**  
124 10th Ave E

**Fleming-Hovlid**  
220 2nd Street W

**Curran-Kranzusch**  
1105 3rd Street E

**Red Cedar**  
201 2nd Street W



## CHECK-IN & KEYS

**The residence halls open on Thursday, January 19th @ 9am.**

You can pick up your keys at the front desk of your assigned building. The desks are open daily 9am-midnight.

The residence halls are locked 24/7 to non-residents. You will need to use your Stout Blue Card to gain entrance to the building. If you do not have your Stout Blue Card, please plan to arrive when the Campus Card Office is open. The Campus Card Office is open Monday - Friday, 8am - 4:30pm, and is located in Price Commons.

Dining service starts on Sunday, January 22nd, 2017.

Class begins on Monday, January 23rd, 2017.

## RENTER'S INSURANCE

You should check to see if your parent's homeowner's policy covers your belongings while living on campus. If it doesn't, we encourage you to consider purchasing a renter's insurance policy.

**The University is NOT liable for damage to your belongings.**

## PHONE NUMBERS

All numbers begin with **715-232-XXXX**.

RESIDENCE HALL	DESK	OFFICE
Antrim-Froggatt-McCalmont .....	1331 .....	3496
Curran-Kranzusch .....	2785 .....	3198
Fleming-Hovliid .....	2101 .....	2783
Hansen-Keith .....	1154 .....	2983
Milnes-Chinnock .....	1154 .....	5997
North .....	2201 .....	3284
Red Cedar .....	1440 .....	1688
South .....	1262 .....	3191
Tutison-Oetting .....	2785 .....	1937
Wigen .....	1451 .....	3492



06





**Like us on facebook!**

[www.facebook.com/StoutHousing](http://www.facebook.com/StoutHousing)

**Add us on snapchat!**

@stout\_housing

**E-mail:** [housing@uwstout.edu](mailto:housing@uwstout.edu)

**Website:** [www.uwstout.edu/housing](http://www.uwstout.edu/housing)

**Phone:** 715-232-1121

170 Price Commons

1110 S. Broadway

Menomonie, WI 54751

The residence halls open on **THURSDAY, JANUARY 19, 2017.**